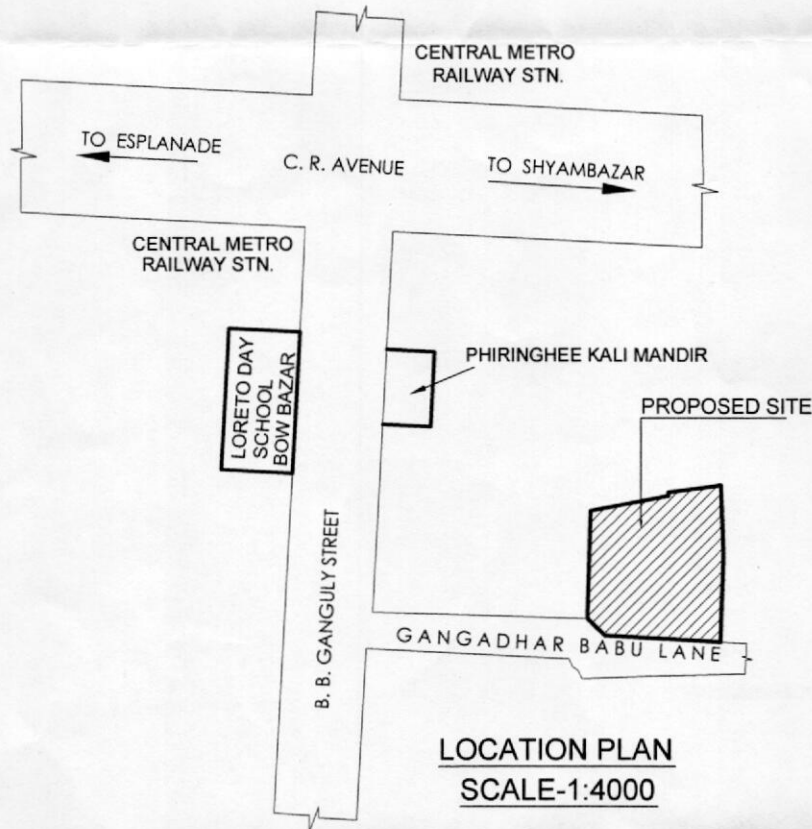


LOCATION DETAILS OF THE PROJECT OF LAND DEDICATED FOR THE PROJECT DEVELOPMENT ALONG WITH ITS BOUNDARIES INCLUDING THE LATITUDE AND LONGITUDE OF END - POINTS OF THE PROJECT.

DEVELOPER : PRAJAPATI BUILDERS

PROJECT : EMPRESS



Anjan Ukil
ANJAN UKIL
Architect
C.O.A. Regn. No.- CA/94/16721
L.B.A. A-271

SIGNATURE OF ARCHITECT

SIGNATURE OF OWNERS

LATITUDE : 22°34'14.5"N
LONGITUDE: 88°21'34.1"E

